



GROWING YOUR COMMUNITY'S FUTURE THROUGH A GIFT TO IVY TECH

Plant a Seed. Watch it Grow. Make a Difference. Your gift of grain supports Ivy Tech Community College students studying agriculture programs in our community.

WHY IVY TECH?

The agriculture programs at Ivy Tech engage students in hands-on activities in and outside of their classrooms while preparing them for real-world agriculture careers. As an affordable option for students, our graduates can enter directly into the agriculture workforce in high-demand, competitive paying careers or they may transfer to many of our four-year partners for further education at a significant cost savings.

Ivy Tech students are from our community and tend to stay and work in our community. Your gift to support Ivy Tech students is an investment in a strong community and the future of the agriculture industry in your area.

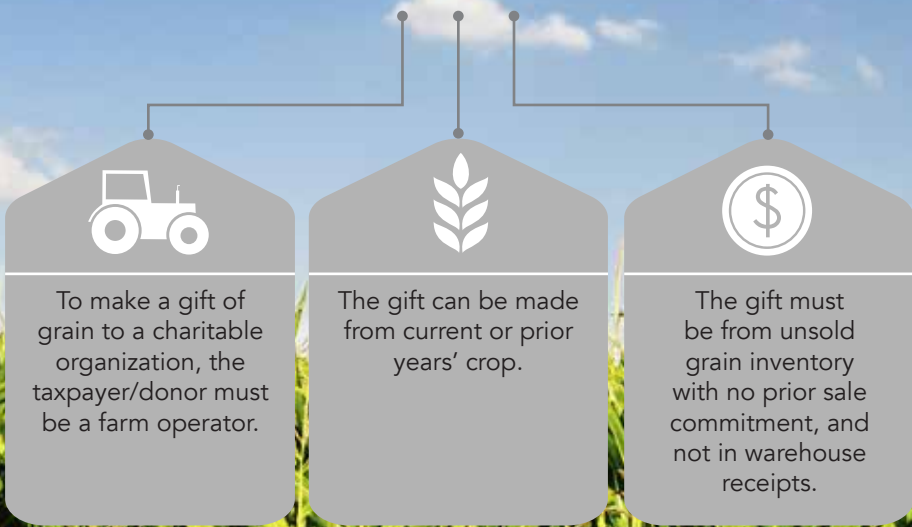
WHY DONATE GRAIN?

- > Simple way to make an immediate impact.
- > Support the next generation of farmers in your community.
- > By gifting grain to Ivy Tech, you will reduce the income you have to pay taxes on, which may result in self-employment tax, federal income tax, and state income tax savings.
- > Costs and expenses incurred in growing the donated crop are still allowable as expenses on your income tax return.

HARVESTING FOR THE NEXT GENERATION



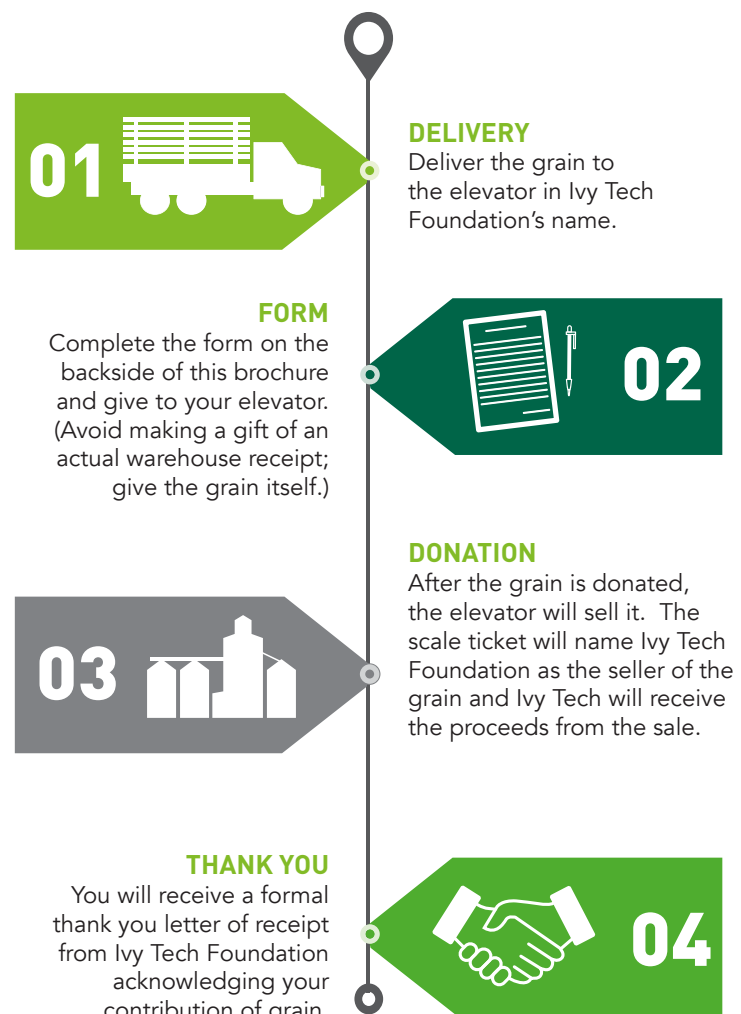
HOW IT WORKS



The farmer must give up dominion and control over the grain and cannot offer any guidance as to when or how to sell the grain. After the transfer, Ivy Tech Foundation assumes the costs of storage, transportation, and marketing and bears the risk of any loss.

MAKE YOUR GIFT

Following these steps will help ensure you receive intended tax benefits from a gift of grain. NOTE: If you deliver the grain, sell it and order the proceeds sent to Ivy Tech Foundation, you will not be eligible for the tax benefits associated with reduced income.



FREQUENTLY ASKED QUESTIONS

CAN A CROP SHARING ARRANGEMENT BENEFIT FROM THIS TECHNIQUE?

No, shares of crop are considered rental income and must be reported as such.

CAN FARM CORPORATIONS BENEFIT IN THE SAME WAY AS THE FARMER WHO IS A SOLE PROPRIETOR?

The benefits described in this brochure apply to calendar year-cash basis sole proprietorships. Corporations are not treated the same way from a tax perspective. Ask your tax professional to determine whether your farm operation can benefit from a charitable gift.

WILL THE GIFTED GRAIN COUNT AS INCOME IN GOVERNMENT PAYMENTS LIMITATION CAPS?

No, the gift of grain won't count as income in your government payments limitation caps calculation.

IF I ITEMIZE DEDUCTIONS, WILL I RECEIVE A CHARITABLE DEDUCTION FOR MY GIFT OF GRAIN?

It is unlikely that the donor will receive a charitable contribution deduction for the gift of grain. Grain is treated as inventory, and thus the donor's charitable contribution deduction would be limited to the lesser of the fair market value or the basis. Basis in the grain will almost always be \$0.



COMMITMENT FROM THE PRODUCER REGARDING A GIFT OF GRAIN TO:

Ivy Tech Foundation
50 West Fall Creek Parkway North Drive
Indianapolis, IN 46208

I/We, _____
(Your Printed Name)

hereby gift _____ bushels of _____
(#) (Type of Grain)

to the Ivy Tech Foundation to be designated to the

_____ campus to support the
(Campus Name)

following area(s) _____
(agriculture scholarship or program's greatest needs)

to be delivered to _____
(Name of Elevator)

Signature: _____ Date: _____

Printed Name: _____

Mailing Address: _____



For More Information Contact:
Ivy Tech Foundation
Annette (Lamb) Flickinger
50 West Fall Creek Parkway North Drive
Indianapolis, IN 46208
317-921-4341
alamb37@ivytech.edu